

## Pattern Collection

# Rug Bauhaus Terreno

Rug ID	TR1993
Material	wool 84%, silk 16%
Knot Density	60 knots/inch <sup>2</sup>
Pile Height	6mm
Technique	hand-knotted

## Size Options

250x300cm

270x360cm

300x400cm

25x25cm

## Pattern Collection

The Pattern Collection was inspired by the development of architectural styles throughout history. Six unique styles, ranging from Roman to Stick, are represented in the collection, each exhibiting its own elegant and sometimes shocking characteristics. The collection offers various color options, allowing you to choose the perfect fit for your space.

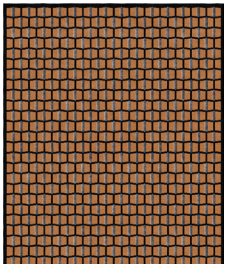
Googie, the headliner design of the collection, embodies the super-aesthetic of 1950s and '60s American retro-futurism, a time of unparalleled innovation and technological advancement. This architectural style was the product of artists who sought to push the boundaries and create new, futuristic shapes. The collection and, in particular, the rug, perfectly captures the philosophy of Googie, with its geometric shapes, harmonious colors, and striking proportions.

## Designed by Natalia Enze

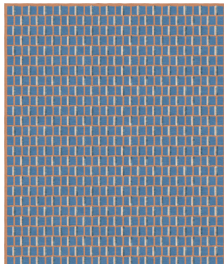
*Natalia Enze is the founder of Enze Architects; she established her studio in Milan in 2016, today she works as a Creative Director and Product designer in the field of interior design and Exhibition, and as an Architect for residential, hospitality and commercial projects.*

*Natalia's work is internationally renewed and has been awarded as Winner of the German Design Award 2022, Archiproducts Design Awards in 2021 and 2020, NYCxDESIGN Awards 2021; Longlisted at the Archiproducts Design Awards 2022.*

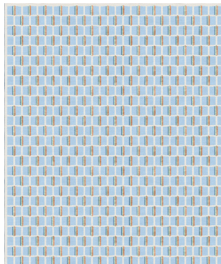
## Color Options



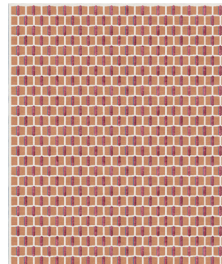
TR1993  
Bauhaus Terreno



TR1994  
Bauhaus Mare



TR1995  
Bauhaus Cielo



TR1996  
Bauhaus Fiore