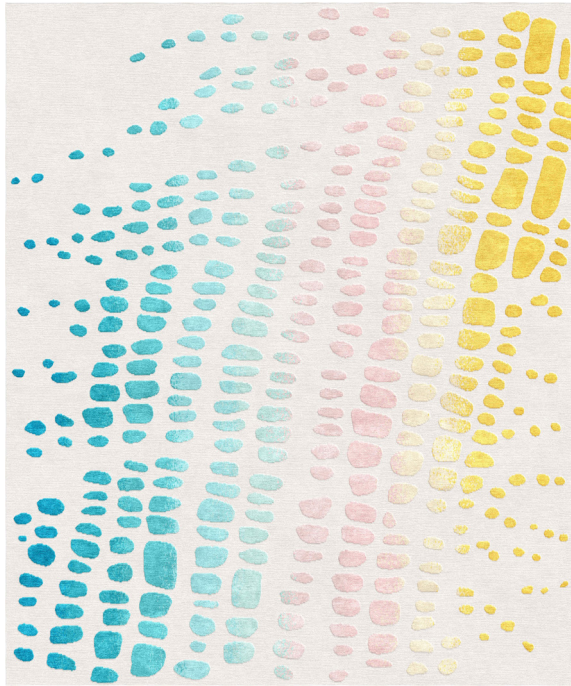


# TAPIS ROUGE



ECO Collection

## Rug Santorini Storm

Rug ID	TR2009
Material	blend silk 90%, bamboo silk 10%
Knot Density	60 knots/inch <sup>2</sup>
Pile Height	6 – 8mm
Technique	hand-knotted

Size Options

250x300cm

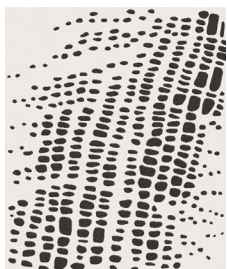
25x25cm

ECO Collection

The islands' and archipelagos' different and bizarre shapes inspire the ECO collection. Created through geological events of different origins, modeled over hundreds of years, the islands are the paradigm of a certain idea of light-heartedness because they are far from everything, but they are also an example of the complexity of nature.

In the designs of the Eco collection, the islands appear summarized in essential shapes made of curved outlines or with few edges. At the basis of the concept, there is an exercise in reading complexity, an intent, albeit playful, to measure everything, even the extremely large, and to be able to translate it into simple and recognizable forms which still retain the image of their archetype.

Color Options



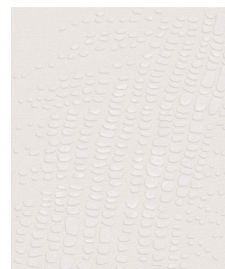
TR2007  
Santorini Night



TR2008  
Santorini Shade



TR2009  
Santorini Storm



TR2010  
Santorini Light