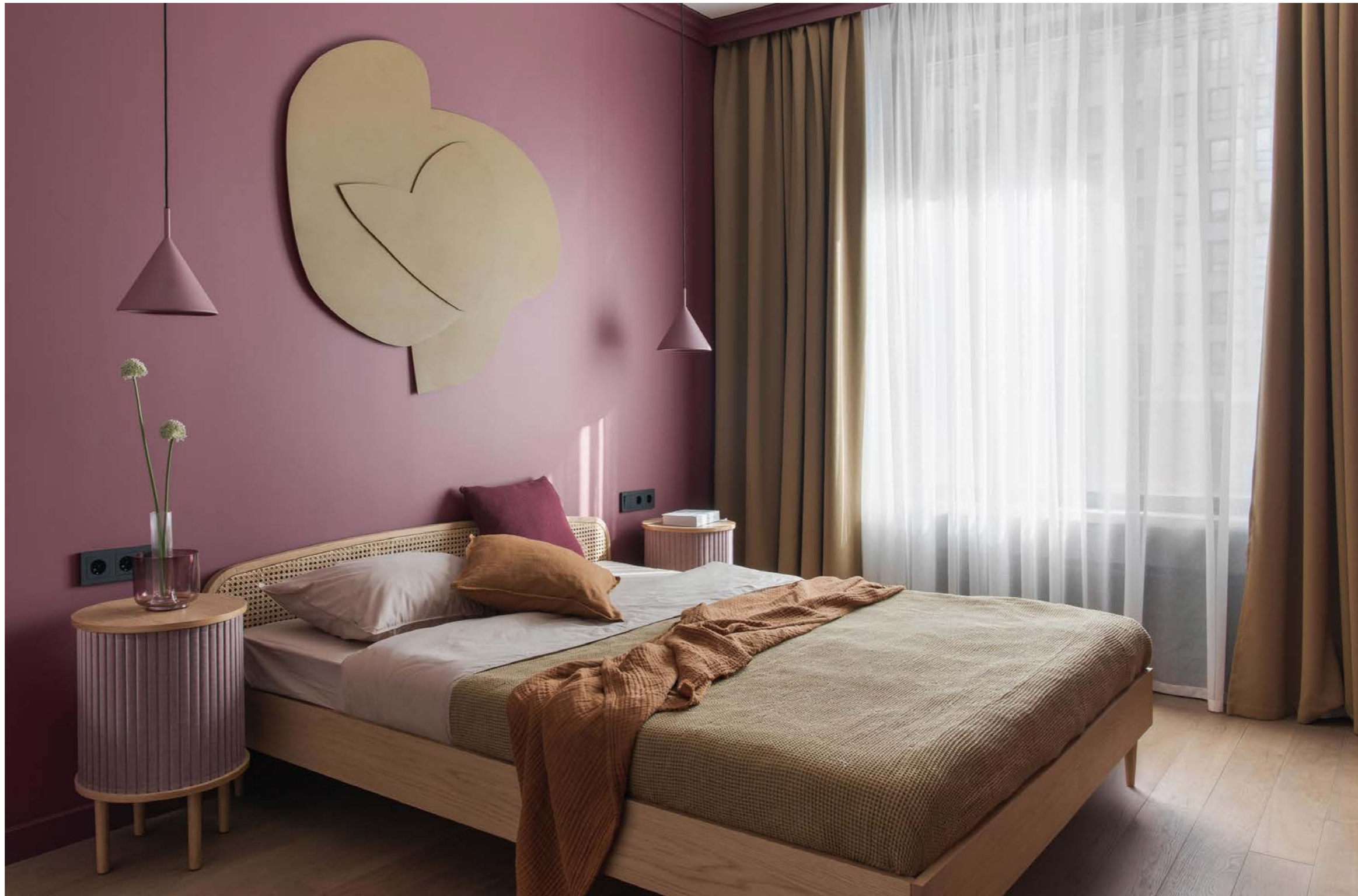


Colorful apartment 56 m²



Bedroom. Bed, La Redoute. Bedside tables, Umage. Pendant light fittings, HKliving. Ceramics, Ceramum. Floral arrangements, Mate Flowers. Bedding, pillows, plaid, everything by Tkano.

PHOTO: OLGA MELEKESSEVA STYLE: SVETLANA KIKINA

GENERAL OPTIONS

- **Type of property:** Apartment-new building
- **Where is it located:** Moscow, Residential Complex Beregovoy
- **Metrage:** 56 m²
- **Style:** modern
- **Color scheme:** complex natural hues: deep blue, burgundy, sage green and terracotta.

When Svetlana Khabeeva and Victoria Papertnaya first walked into this apartment, there was a beautiful golden autumn outside, with a beautiful landscape of grass and wild flowers in the windows. “We wanted to incorporate this color scheme into the interior,” the designers recall. That’s how complex natural hues came into the project: deep blue, burgundy, billowy green and terra cotta. The developer did not change the layout, the accent was made on the game of colors and textures, trying to make the apartment as bright and cheerful as its owner.



Bedroom, a fragment. The panel on the wall above the bed was made of plywood by the designers using laser cutting.

PHOTO: OLGA MELEKESSEVA STYLE: SVETLANA KIKINA

The most difficult thing was to connect the different shades with each other, but even here nature helped: the designers learned from it. In each room, a new shade appears, which flows into the next one and is complemented by a new color.



PHOTO: OLGA MELEKESSEVA STYLE: SVETLANA KIKINA



PHOTO: OLGA MELEKESSEVA STYLE: SVETLANA KIKINA



PHOTO: OLGA MELEKESSEVA STYLE: SVETLANA KIKINA

Thus, the burgundy color from the bedroom seeped into the wormwood-colored bathroom. Above the bathroom, mugwort tile in the tone of the walls is complemented by burgundy contrasting grout. Black plumbing fixtures and fixtures, as well as a large black-framed mirror, add expression to the room.



Bathroom. The cabinet under the sink is made to order. Bathroom fixtures, Timo. Pendant lighting fixtures, H&M Home. Decor, Ceramum. Tile, Wow.

PHOTO: OLGA MELEKESSEVA STYLE: SVETLANA KIKINA



Bathroom. Table, La Redoute. On the floor: porcelain stoneware, Arcana Ceramica. Wall tiles, Equipe.

PHOTO: OLGA MELEKESSEVA STYLE: SVETLANA KIKINA

After making its mark in the bathroom, the burgundy color sailed further into the miniature living room, where the central place is taken by the sofa and the walls are painted in the color of wormwood. The dominant color here is diluted with gray and ochre.



Living room. Sofa, Diwan.ru. Armchair and burgundy table, La Redoute.
Table made of metal imitation marble, La Forma.
Above the sofa by Shirin Bokieva. Carpet, Tapis Rouge.

PHOTO: OLGA MELEKESSEVA STYLE: SVETLANA KIKINA



Living room, fragment. Wardrobe made to order.

PHOTO: OLGA MELEKESSEVA STYLE: SVETLANA KIKINA



Living room, fragment. TV stand, Lulu Space.

PHOTO: OLGA MELEKESSEVA STYLE: SVETLANA KIKINA

The tones of autumn are probably the most beautiful, not for nothing are so many poems devoted to them. But the owner of the apartment did not want to live in eternal autumn, she loves summer, the sea, the sand, the beach. Memories of summer live in two places in the apartment: in the hallway and in the kitchen.



Kitchen. Kitchen set, "Maria". Tiles on the apron, 41zero42. Dining table, Lulu Space. Upholstered chair, Delo. Wooden chairs, La Redoute. Pendant lamp, HKliving. Decor, Ceramum. Vase on table and floral arrangement, Mate Flowers. On the floor tiles Mud, Wow.

PHOTO: OLGA MELEKESSEVA STYLE: SVETLANA KIKINA

“On the kitchen fronts, we used two basic shades: deep blue and wormwood,” say the authors of the project. “It was especially difficult to choose a kitchen countertop in the tone of the blue fronts. The centerpiece of the composition is a massive oak table with a rattan pendant lamp, which is shaped like a beach umbrella.”



Kitchen. Kitchen set, “Maria”. On the apron tiles, 41zero42.

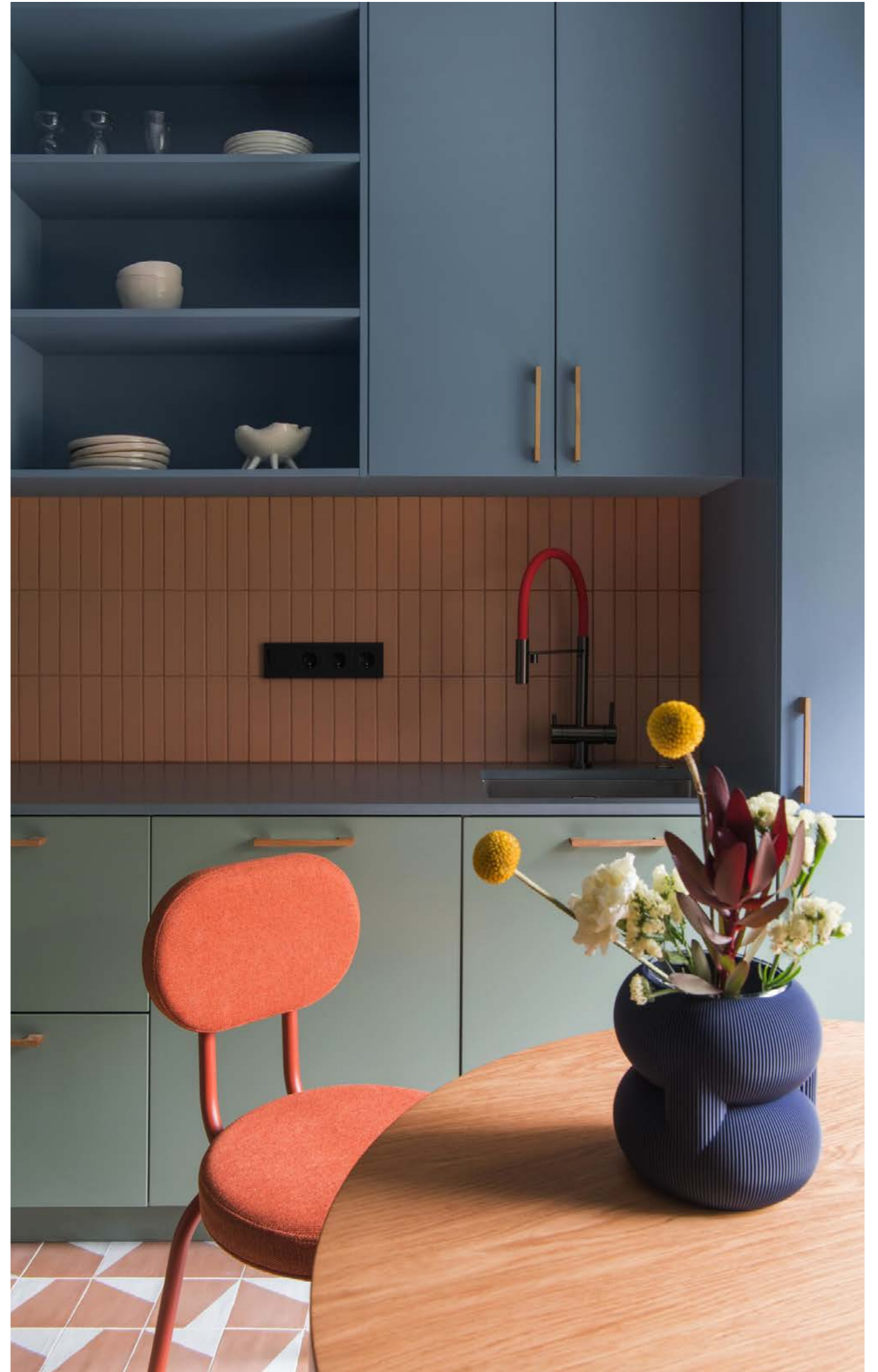
PHOTO: OLGA MELEKESSEVA STYLE: SVETLANA KIKINA

Despite the abundance of color in the room, the designers dared to add bright red hues as well - the faucet and chair burn like maple leaves in mid-autumn.



Kitchen, a fragment.

PHOTO: OLGA MELEKESSEVA STYLE: SVETLANA KIKINA



Kitchen, a fragment.

PHOTO: OLGA MELEKESSEVA STYLE: SVETLANA KIKINA

In the hallway, the designers made a reference to nautical motifs, since the client likes to travel to warm countries. The walls were painted a deep blue shade, and the floor was tiled in terracotta and white, reminiscent of the sea surf.

And now the hostess of the apartment does not even need to go anywhere to change the image and get new experiences. It is enough to move from the bedroom to the living room, from the living room to the kitchen. And add memories of former travels, which warm our souls during forced stops.



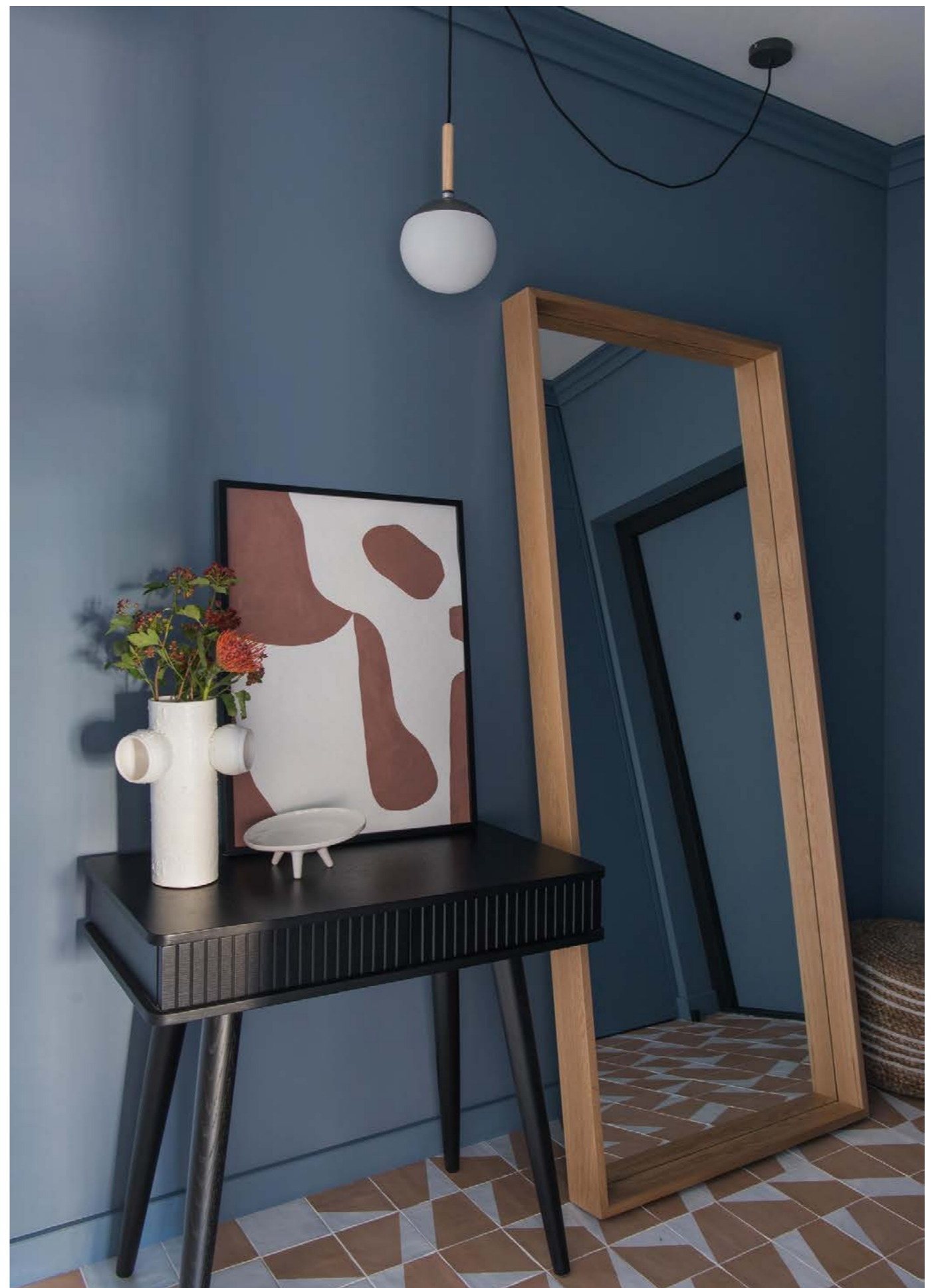
Entrance Hall. Mirror and console, Lulu Space. Pouffe, La Forma. Closet made in carpentry. Pendant lamp, Faro Barcelona. Tile, Wow.

PHOTO: OLGA MELEKESSEVA STYLE: SVETLANA KIKINA



Hallway. Tiled floor Mud, Wow.

PHOTO: OLGA MELEKESSEVA STYLE: SVETLANA KIKINA



Hallway, fragment. Mirror and console, Lulu Space.
On the console work by Shirin Bokieva.

PHOTO: OLGA MELEKESSEVA STYLE: SVETLANA KIKINA



Bathroom. Countertop under the sink, Terrazzo Territory. Sanitaryware Timo.
Pendant lights, Frandsen. Tile, Wow.

PHOTO: OLGA MELEKESSEVA STYLE: SVETLANA KIKINA